



CHÂTEAU DE RAYMONT PIERRE  
VAL TERBI  
BY THE LIVING CIRCLE

# *Your Event*

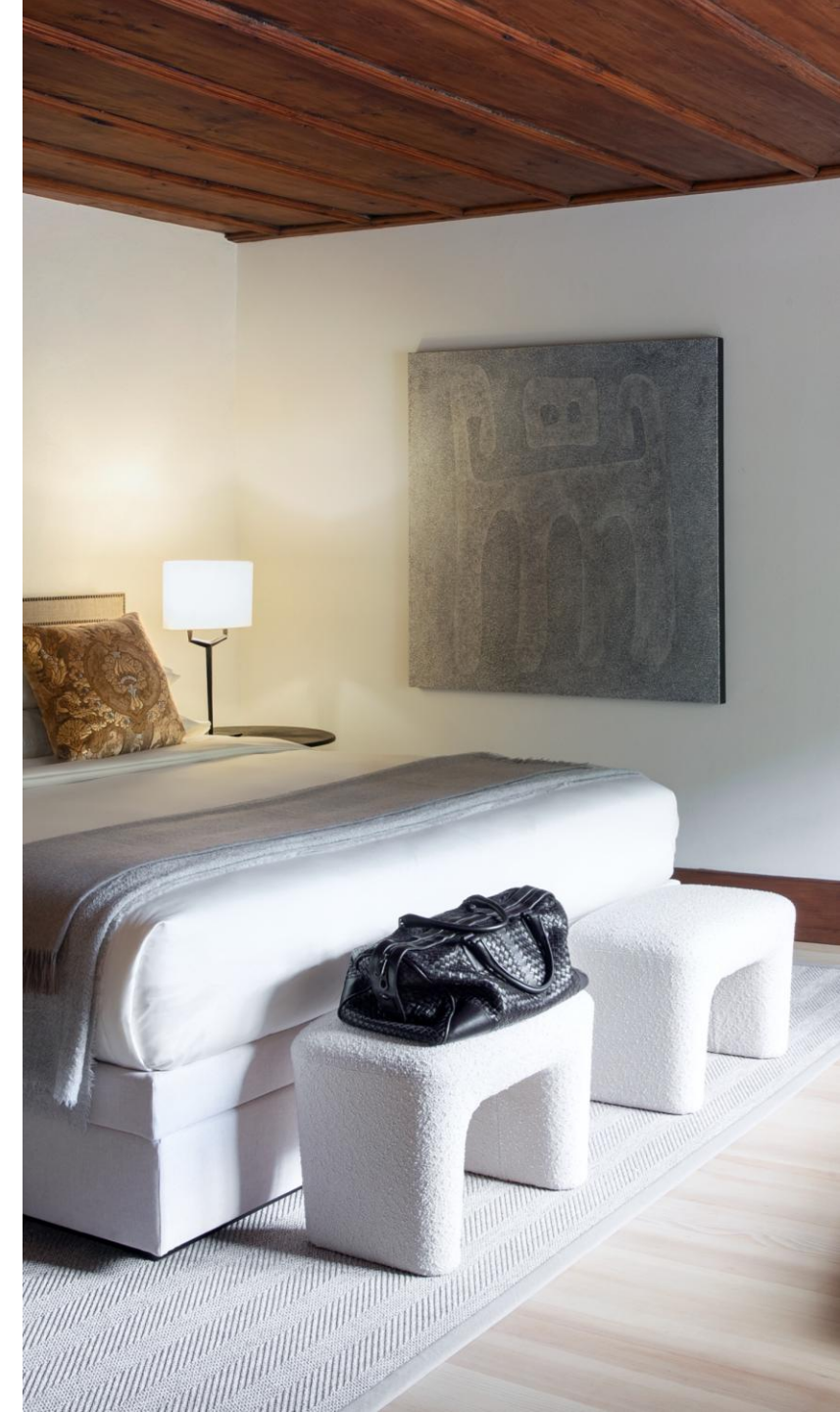
Factsheet



# Rooms Château the Raymontpierre

Category	Area in SQM	Number of Rooms	Maximum Occupancy	Location
<i><u>Chambre Château</u></i>	15	4	2	Château de Raymontpierre
<i><u>Junior Suite La Chapelle</u></i>	37	1	2	Château de Raymontpierre
<i><u>Suite Raymontpierre</u></i>	37	1	3-4	Château de Raymontpierre
<i><u>Charmant Double</u></i>	20	4	2	La Grange
<i><u>Charmant Grand Lit</u></i>	15	4	2	La Grange

Further information and images of our rooms can be found at the following link:  
[Our Rooms at Château de Raymontpierre](#)



# Event Space Capacity

Maximum Number of Guests by Seating Arrangement

Room	Area in SQM	Reception	Dinner/Lunch	Meeting	Wedding
<i>Le Grand Salon</i>	36	28	18	14 (20)	18
<i>Salle Côté Jardin</i>	19	10	10	As Break-Out area up to 8	10
<i>Le Grand Salon &amp; Salle Côté Jardin</i>	55	28	28	14 (20)	28
<i>Salle des Chevaliers</i>	31	10	-	As Break-Out area up to 14	-
<i>Salle Belvédère</i>	39	-	-	12	-
<i>Jardin</i>	>200	28	28	-	28
<i>Kapelle</i> (nicht geweiht)	16	-	-	-	18

Further information and images of our event spaces can be found at the following link:  
[Event Space](#)





# *Exclusive Use of Château de Raymontpierre*

The Château de Raymontpierre is available for exclusive use for events with overnight stays and can accommodate up to 28 guests in 14 elegantly furnished rooms.

During your stay, you will enjoy complete privacy: all rooms as well as all public and shared areas of the estate are reserved exclusively for your group.

No other guests are accommodated on the property. The maximum capacity is 28 people.

## *Buy-out Price & Minimum Consumption*

The nightly rate for exclusive use of Château de Raymontpierre is:

- *Weekday (Sunday-Friday):* CHF 6'790.00
- *Weekend (Friday-Sunday):* CHF 7'500.00

The price applies regardless of the actual number of guests and is based on a maximum capacity of 28 people.

In addition, a minimum consumption of CHF 170 per guest and night is required. This includes all culinary services at Château de Raymontpierre, in particular lunch and dinner as well as aperitifs.

### CHECK-IN/ CHECK-OUT TIME

The Château de Raymontpierre is available from 3:00 PM on the day of arrival until 11:00 AM on the day of departure. Any arrival or departure times outside this period, including time needed for setup or preparation before or after the event, are subject to additional charges.



## *Included Services*

As part of the buy-out package, the following services are included:

Exklusive Nutzung des gesamten Châteaux de Raymontpierre

- 14 hotel rooms, including breakfast
- Exclusive use of the entire Château de Raymontpierre
- Exclusive use of all event and common areas
- Existing basic technical equipment (an overview can be found on page 8)

### **NOT INCLUDED IN THE BUY OUT PRICE**

- Food and beverages based on consumption
- External services / third-party providers (e.g. technology, decoration, entertainment)
- Extended technical equipment
- Individual additional services (e.g. menus, name cards, floral arrangements & decoration)

These services will be charged separately.

# *Catering – Our Philosophy*

## MENU

In our kitchen, respectful use of nature and resources as well as the principle of a circular economy are at the core of our philosophy. Whenever possible, we use products from our own garden or from the farm located directly next to the Château. Seasonality, regional sourcing, and working in harmony with nature shape our cuisine and give each menu its distinctive character.

Let our hosts surprise you with a creative and finely composed 4-course menu.

Upon request, you may also select your menu in advance; individual preferences can gladly be accommodated.

### *Menu prices*

- 4-course menu from CHF 130 per person
- Individually composed menus from CHF 170 per person

## BEVERAGES

We are happy to provide you with our current drinks menu. A water fee of CHF 6 per person per day applies.

## BREAKFAST

A rich farmhouse-style breakfast with a variety of regional products is included in the buy-out package.





## *Technical Setup*

### LE GRAND SALON

4K Laser Projector & Screen, 2m x 1.12m  
ClickShare  
Universal Disc Player  
Apple TV  
4x ceiling-mounted loudspeakers



### SALLE BELVÉDÈRE

55-inch TV Screen  
Apple TV Soundbar

# *General Information*

## **ADMINISTRATIVE SERVICES**

We are pleased to support you in organising your event. All administrative work related to the event is included in the service. Additional tasks such as creating seating plans, writing name cards, etc. will be charged separately based on actual effort.

## **OBLIGATION TO PROVIDE INFORMATION**

The organiser is required to communicate transparently with Château de Raymontpierre regarding the nature, content, and format of the event, particularly in relation to ethical, political, or religious aspects.

## **NUMBER OF GUEST**

The final number of guests must be confirmed in writing to Château de Raymontpierre no later than 14 days prior to arrival. This number is binding and serves as the basis for planning as well as for the calculation of all services.

## **RESERVED TIMES**

The use of the premises is limited to the contractually agreed period. Check-in and check-out times apply as specified in the agreement. Any access outside the agreed times requires prior written approval from Château de Raymontpierre and will be charged accordingly.

## **BRINGING IN FOOD AND BEVERAGES**

Food and beverages must be sourced from the Château. In special cases (e.g. national specialties), exceptions may be granted, subject to an appropriate service surcharge.





# *General Information*

## **MENU**

For quality reasons, we offer a uniform menu for groups. Let our hosts surprise you with a creative and finely composed 4-course menu. Upon request, you may also select your menu in advance, and individual preferences can be accommodated. Allergies and specific dietary requirements must be communicated no later than 14 days prior to arrival.

## **MENUCARDS**

We are happy to print individual menu cards for your event with a customised title and/or logo. This service is charged at CHF 5 per menu card.

## **SEATING PLAN | NAME CARDS**

We can prepare name cards for you; however, a seating plan must be provided no later than 72 hours in advance. We are happy to place the cards according to your seating plan. This service is charged at CHF 2 per name card.

## **FLOWERS | DECORATION**

Our event spaces are generally decorated in a minimalist style. We are happy to connect you with our external floristry partners. Decoration, branding, and installations require prior approval. Attaching materials to walls, ceilings, or furniture is not permitted.

## **DELIVERIES & STORAGE**

Storage of materials is only possible by prior agreement and confirmation. Deliveries for events must be announced in advance and delivered to the hotel as close to the event date as possible. Materials may be stored free of charge for up to two working days after the event. Any additional storage will be charged at CHF 50 per m<sup>2</sup> per day. Customs or transport costs will be fully passed on.

# *General Information*

## **MUSIC**

Please note that we accept live music for your event; however, it must remain within an appropriate volume level. The Event Team will be happy to advise you on the available options.

## **EXTENTION**

Events extending beyond midnight are charged at a flat rate of CHF 350 per commenced hour. Any extension must be requested no later than 14 days prior to the event.

## **MITARBEITER**

Staff required for the event will be provided by the Château. Additional support staff needed for setup and transport of technical equipment, decorations, or other materials is not included free of charge. To ensure proper planning, please inform us as early as possible if additional personnel is required. Extra staff services will be charged accordingly.

Hourly rate per staff member: CHF 55

## **PARKING**

Château de Raymontpierre offers 10 parking spaces. Please ensure your logistics are organised accordingly so as not to exceed this capacity.

## **PRICE**

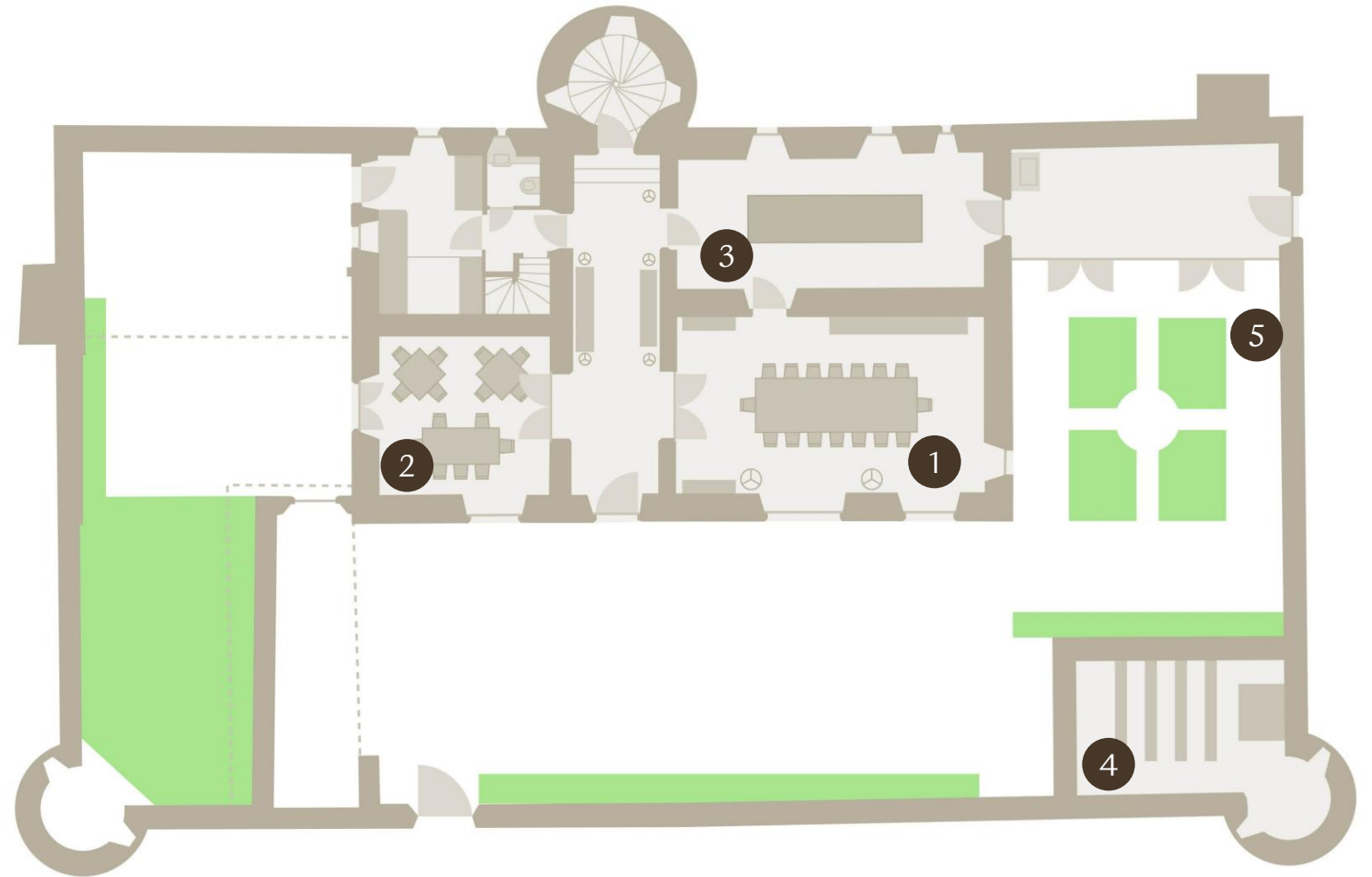
All prices include service charges and statutory VAT. Price adjustments are subject to change.



# *Floor plan Château de Raymontpierre*

## GROUND FLOOR

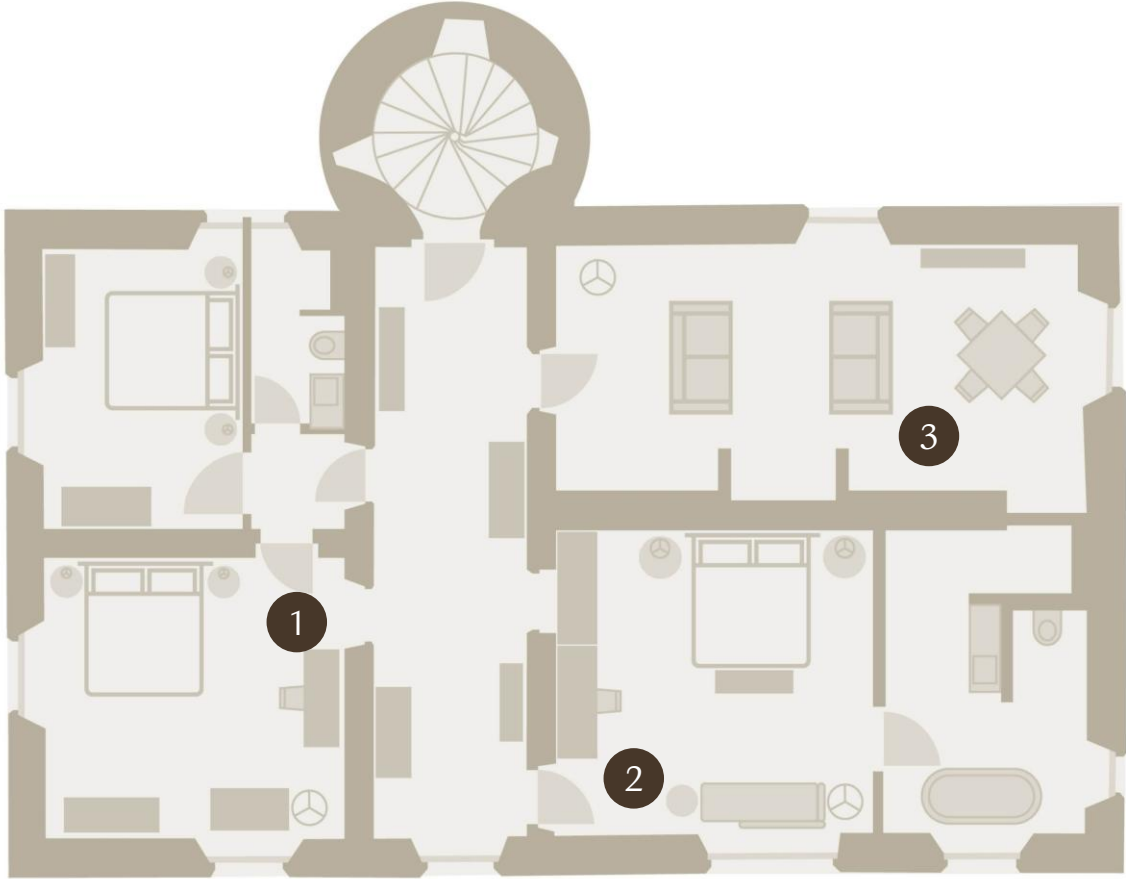
- 1 LE GRAND SALON
- 2 SALLE CÔTÉ JARDIN
- 3 LA CUISINE
- 4 LA CHAPELLE
- 5 JARDIN DES HERBES



# Floor Plan Château de Raymontpierre

## UPPER FLOOR

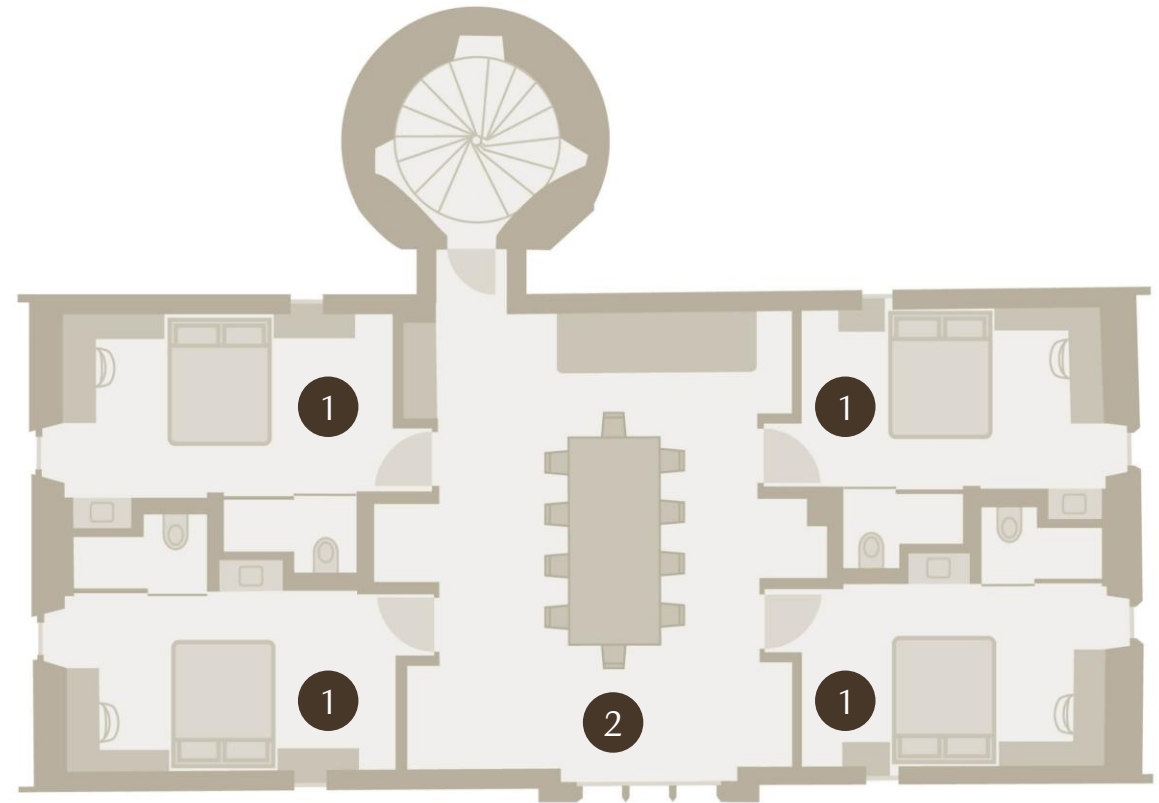
- 1 SUITE DE RAYMONTPIERRE
- 2 JUNIOR SUITE LA CHAPELLE
- 3 SALLE DES CHEVALIERS



# *Floor Plan Château de Raymontpierre*

## ATTIC FLOOR

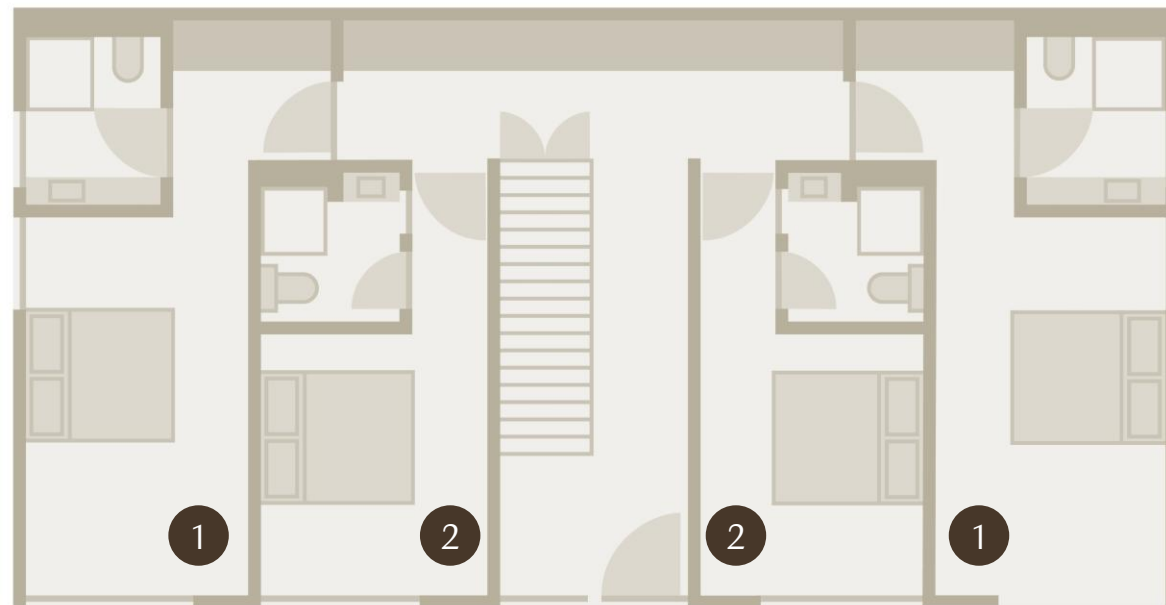
- 1 CHAMBRE CHÂTEAU
- 2 SALLE BELVÉDÈRE



# Floor Plan La Grange

## GROUND FLOOR

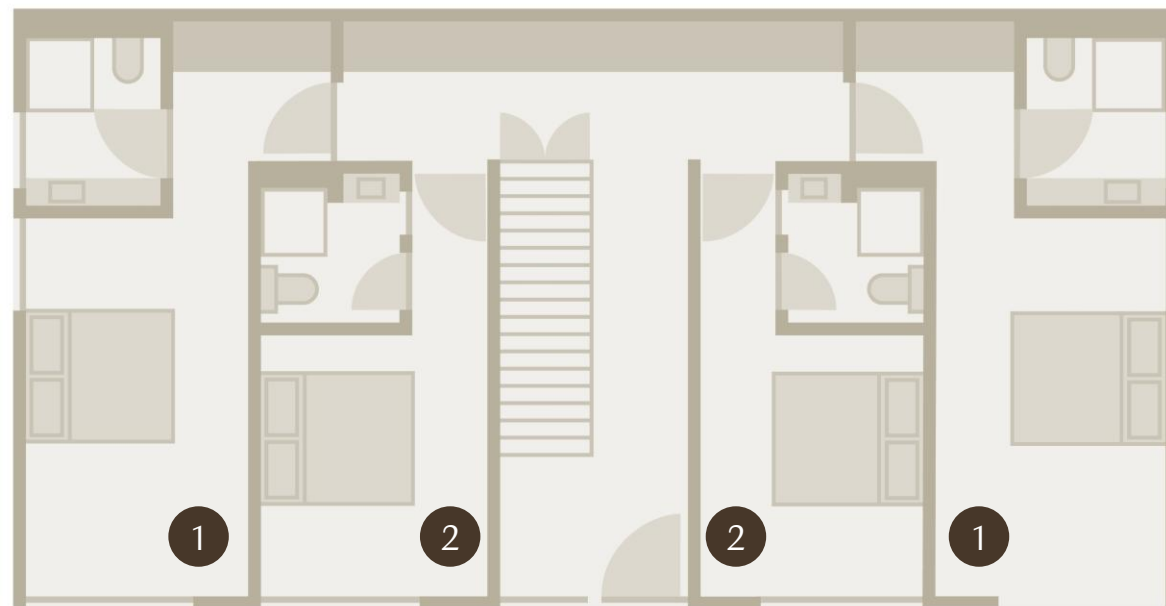
- 1 CHARMANT DOUBLE
- 2 CHARMANT GRAND LIT



# Floor Plan La Grange

## UPPER FLOOR

- 1 CHARMANT DOUBLE
- 2 CHARMANT GRAND LIT



# CONTACT

CHÂTEAU DE RAYMONTPIERRE 109  
2829 VERMES

EVENTS@CHÂTEAUDERAYMONTPIERRE.CH  
+41 44 227 20 60

THE LIVING CIRCLE LUXURY FED BY NATURE